



## **DeCORE APCI-95 MOD**

**DeCORE APCI-95 MOD** is a very low foaming, water soluble anionic corrosion inhibitor used for the prevention of rust on a variety of metal surfaces. It is suggested for use as an all purpose corrosion inhibitor for copper, brass, magnesium, bronze, galvanized steel, cast iron and other ferrous and non-ferrous metals.

### **SPECIFICATIONS**

Appearance @ 25°C:	Clear amber viscous liquid
Color* (Gardner):	12 max.
pH (1% in DW):	7.0 - 8.0

\*darkens upon aging

**SOLUBILITY** (10% by weight): DeCORE APCI-95 MOD is soluble in water, alcohols and glycols. It is insoluble in solvents and dispersible in oils.

### **TYPICAL PROPERTIES**

% Activity	95% min.
Density @ 25°C	~1.02 g/ml

- Corrosion inhibitor for metal in aqueous systems at pH  $\geq 7$
- Not stable in acid systems
- Virtually non-foaming
- Hard water stable
- Effective at low use levels (0.1 – 0.5%)
- Biodegradable
- Non-phenolic
- Nitrite free

### **APPLICATIONS**

- Synthetic coolants and cutting fluids
- Industrial cooling towers
- Water based lubricants
- Alkaline metal cleaners
- Aerosol formulations
- Low foam alkaline cleaners
- Radiator fluid additive
- Treating baths for copper and copper alloys
- Water based paints and coatings

*Continued*

6501 Congress Avenue, Suite 100 • Boca Raton, FL 33487 • (561) 994-9696 • FAX (561) 994-9995

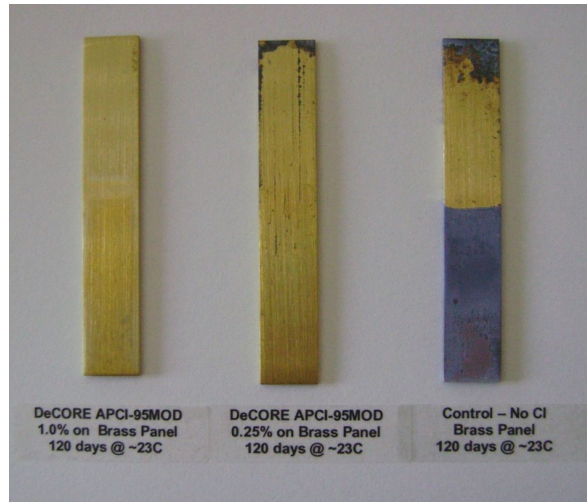
[www.DeForestEnterprises.com](http://www.DeForestEnterprises.com) • [info@DeForestent.com](mailto:info@DeForestent.com)

The information and suggestions given are drawn from data we believe to be reliable, but in all cases the user should check and confirm the suggestions and results in his/her own use before proceeding further. DeFOREST Enterprises, Inc. offers no warranties other than to guarantee the products are manufactured to specifications and cannot assume any liability or risk involved in the use of our products since these conditions of use are beyond our control. None of the suggestions or recommendations constitute freedom from any patents that may be existent in the field or be issued.

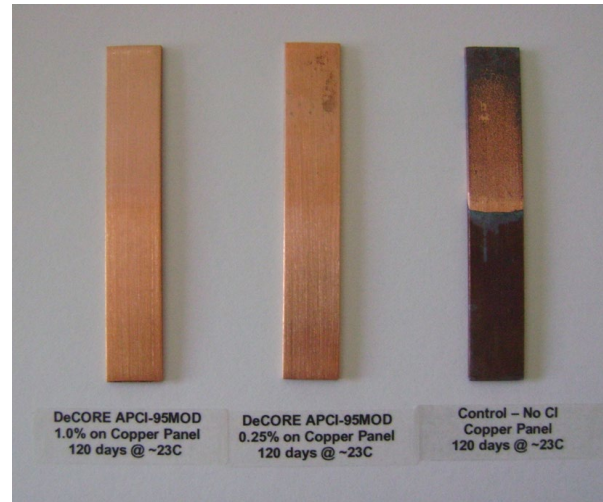
## Metal Panel Submersion Corrosion Testing using DeCORE APCI-95MOD

The bottom halves of the metal panels were submerged into a solution containing 0.25% & 1.0% by weight DeCORE APCI-95MOD in hard water (100 ppm as CaCO<sub>3</sub> & 71 ppm as chloride) at room temperature. The top half of the panel was exposed to the vapor phase in closed glass containers. Photos taken after **120 days** of testing.

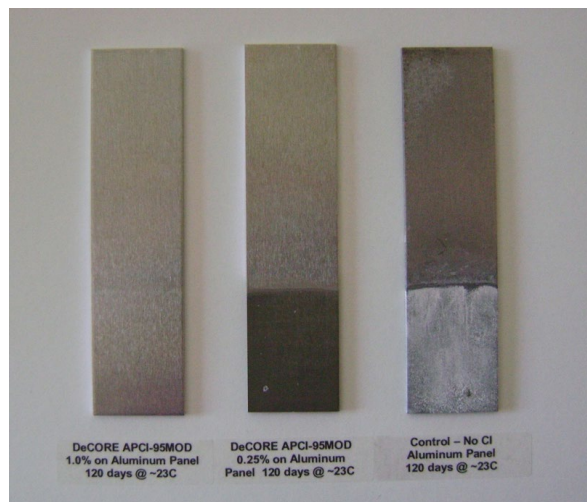
### DeCORE APCI-95MOD – Brass Panels



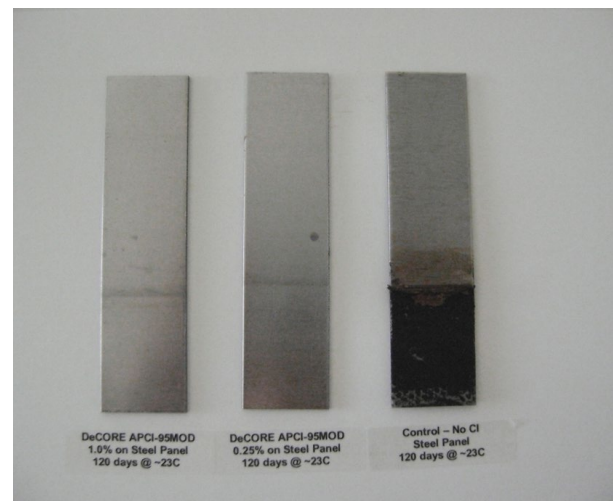
### DeCORE APCI-95MOD – Copper Panels



### DeCORE APCI-95MOD – AL Panels



### DeCORE APCI-95MOD – Steel Panels



### Metal Panel Descriptions

Brass Panels: #260 Brass Alloy (30% Zn / 70% Cu)  
Aluminum Panels: #2024 Bare Aluminum

Copper Panels: #110 Copper (99.95% Cu)  
Steel Panels: SAE 1010, cold rolled steel (mild carbon)

*Continued*

6501 Congress Avenue, Suite 100 • Boca Raton, FL 33487 • (561) 994-9696 • FAX (561) 994-9995

[www.DeForestEnterprises.com](http://www.DeForestEnterprises.com) • [info@DeForestent.com](mailto:info@DeForestent.com)

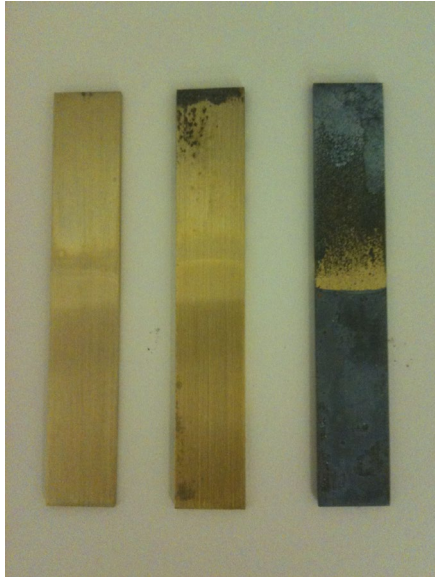
The information and suggestions given are drawn from data we believe to be reliable, but in all cases the user should check and confirm the suggestions and results in his/her own use before proceeding further. DeFOREST Enterprises, Inc. offers no warranties other than to guarantee the products are manufactured to specifications and cannot assume any liability or risk involved in the use of our products since these conditions of use are beyond our control. None of the suggestions or recommendations constitute freedom from any patents that may be existent in the field or be issued.

## Metal Panel Submersion Corrosion Testing using DeCORE APCI-95MOD

The bottom halves of the metal panels were submerged into a solution containing 0.25% & 1.0% by weight DeCORE APCI-95MOD in hard water (100 ppm as CaCO<sub>3</sub> & 71 ppm as chloride) at room temperature. The top half of the panel was exposed to the vapor phase in closed glass containers. Photos taken after one year of testing.

### Brass Panels

1.0%      0.25%      Control-no Cl



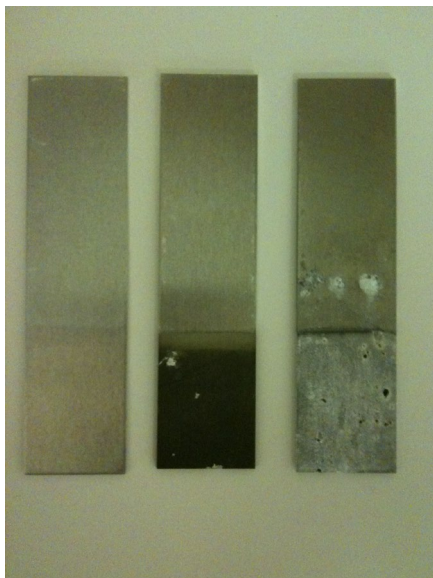
### Copper Panels

1.0%      0.25%      Control-no Cl



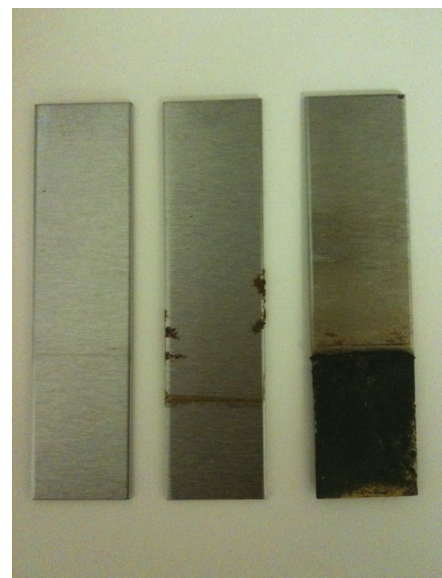
### Aluminum Panels

1.0%      0.25%      Control-no Cl



### Steel Panels

1.0%      0.25%      Control-no Cl



6501 Congress Avenue, Suite 100 • Boca Raton, FL 33487 • (561) 994-9696 • FAX (561) 994-9995

[www.DeForestEnterprises.com](http://www.DeForestEnterprises.com) • [info@DeForestent.com](mailto:info@DeForestent.com)

The information and suggestions given are drawn from data we believe to be reliable, but in all cases the user should check and confirm the suggestions and results in his/her own use before proceeding further. DeFOREST Enterprises, Inc. offers no warranties other than to guarantee the products are manufactured to specifications and cannot assume any liability or risk involved in the use of our products since these conditions of use are beyond our control. None of the suggestions or recommendations constitute freedom from any patents that may be existent in the field or be issued.